

*How to make your lawn  
"GREEN"?*

- G** - "GREEN" lawn practices
- R** - Right fertilizer, right time
- E** - Evaluation of your lawn
- E** - Enhance your soils
- N** - New maintenance plan



**"GREEN" lawns...**

- Are environmentally responsible!
- Are more drought tolerant!
- Require less maintenance!
- Protect local drinking water!
- Protect your neighborhood streams, lakes, and ponds!

For more assistance with lawn care, plant problems, or for gardening tips and questions, please contact us! Call 540-341-7950 ext. 1 or email [tohlwile@vt.edu](mailto:tohlwile@vt.edu). For more information on free classes or publications on environmental related topics or visit our websites [www.ext.vt.edu](http://www.ext.vt.edu) Or [www.fc-mg.org](http://www.fc-mg.org)



Virginia Cooperative Extension programs and employment are open to all, regardless of race, color, national origin, sex, religion, age, disability, political beliefs, sexual orientation, or marital or family status. An equal opportunity/affirmative action employer.



**Virginia  
Cooperative  
Extension**

Virginia Tech  
Virginia State University  
[www.ext.vt.edu](http://www.ext.vt.edu)

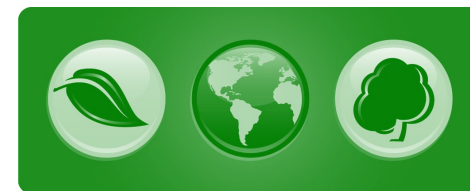
*JOHN MARSHALL SOIL AND  
WATER CONSERVATION  
DISTRICT*



*CONSERVING NATURAL  
RESOURCES  
FOR A BETTER ENVIRONMENT*

# "Green" Grass

## Lawn Program



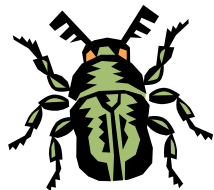
Let us help you  
**"Green"** your lawn!

**Make the best use of  
valuable resources,  
Your time & money!**

Virginia Cooperative Extension  
Fauquier Office  
24 Pelham Street  
Warrenton, VA 20186  
Phone: 540-341-7950  
Fax: 540-349-1792

## Why participate in the "Green" Grass lawn program?

1. A healthy lawn is the best defense against weeds, insects, or disease!



2. Turfgrass is a high maintenance plant. To grow grass well, it is important to know what it needs!

3. Extension volunteers will...

- collect a soil sample!
- measure your total lawn area!



4. You will receive...

- a lawn care handbook!
- a customized lime & fertilizer plan for your lawn!

We will help you learn proper turf fertilization, maintenance practices, and timing to prevent problems!



## How do you join the program?

A. Complete and mail the attached application to:

Virginia Cooperative Extension  
Fauquier Office  
24 Pelham Street  
Warrenton, VA 20186

B. Attach a check for \$30 made payable to VCE-Fauquier. This includes one soil test for your lawn.

This program is currently open to residents in Fauquier County.

If you have any questions, please 540-341-7950 ext. 1 or email [tohlwile@vt.edu](mailto:tohlwile@vt.edu)